



Question:

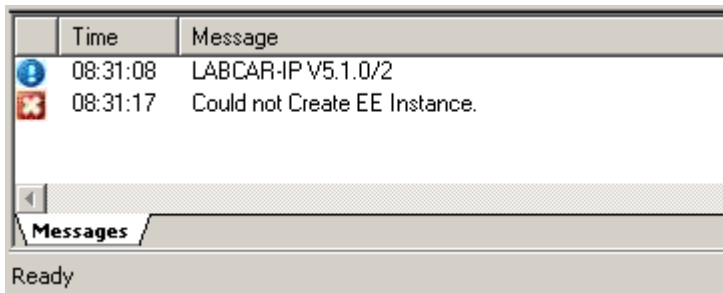
Problem

The Experiment Environment is not started automatically after the first build of the LCO project in the LABCAR-IP

or it is not possible to open the Experiment Environment out of the LABCAR-IP

Error message in "Messages" log:

Could not Create EE Instance



Answer:

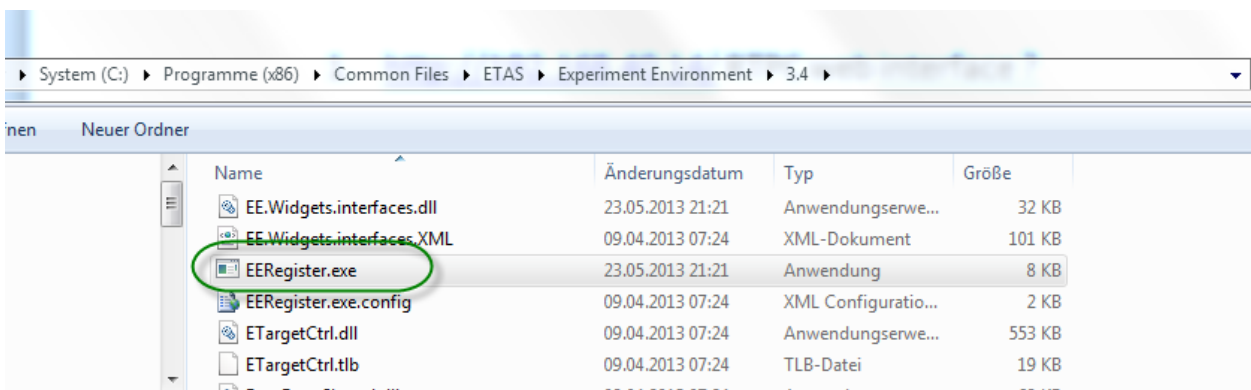
Solution

Register the Experiment Environment again.

Therefore close EE.exe, run EERegister.exe (please run as administrator) and reboot:

[Installdirectory]\Experiment Environment3.x\EE\EERegister.exe

Since EE V3.4.0 the folder has changed to:



Additional information:

-



In case of further questions:

You will find further FAQ here: www.etas.com/en/faq

Please feel free to contact our Support Center, if you have further questions.

Here you can find all information: <http://www.etas.com/en/hotlines.php>

441770046 / 4

This information (here referred to as „FAQ“) is provided without any (express or implied) warranty, guarantee or commitment regarding completeness or accuracy. Except in cases of willful damage, ETAS shall not be liable for losses and damages which may occur or result from the use of this information (including indirect, special or consequential damages).