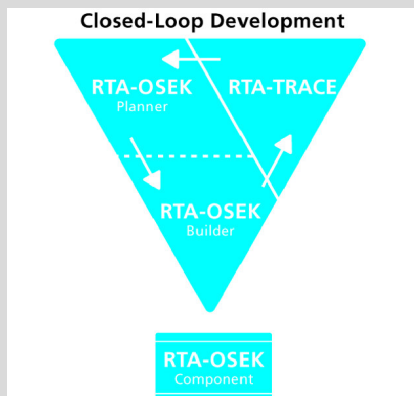


RTA-OSEK

Motorola Star12 with the Cosmic Compiler



- OSEK/VDX OS version 2.2 certified OS
- RTOS overhead: 12 bytes RAM, 72 bytes ROM
- Category 2 interrupt latency: 18 CPU cycles
- Applications include: HEVAC, Occupant Safety Systems, Passive Entry, etc.

RTA-OSEK

RTA-OSEK provides an application design environment that combines the smallest and fastest OSEK RTOS with a unique timing analysis tool.

This port data sheet discusses the Motorola Star12 port of the RTA-OSEK kernel alone and should be read in conjunction with the Technical Product Overview “*Developing Embedded Real-Time Applications with RTA-OSEK*” available from LiveDevices.

The kernel element of RTA-OSEK is a fixed priority, pre-emptive real-time operating system that is compliant to the OSEK/VDX OS standard version 2.2 for all four conformance classes (BCC1, BCC2, ECC1 and ECC2) and intra processor communication using OSEK COM Conformance Classes A and B (CCCA and CCCB).

All CPU overheads of the kernel have low worst case bounds and little variability in execution time. The kernel is particularly suited to systems with very tight constraints on hardware costs and where run-time performance must be guaranteed

The kernel is configured using an offline tool provided with RTA-OSEK. Determining in advance which features are used allows memory requirements to be minimized and API calls to be opti-

mized for greatest efficiency.

All tasks and ISRs in RTA-OSEK run on a single stack – even extended tasks. This allows dramatic reductions in application stack space requirements.

The RTA-OSEK kernel is designed to be scalable. When a task uses queued activation or waits on events, the additional RTOS overhead required to support these features is paid by the task rather than by the system. This means that a basic single activation task uses the same resources in a BCC1 system as it does in an ECC2 system.

Software Environment

Compiler/Assembler/Linker

The libraries containing the code for the RTA-OSEK kernel have been built using the following tools:

- Cosmic 68HC12 C Compiler Version 4.5f
- Cosmic 68HC12 Macro-assembler Version 4.2r
- Cosmic Linker Version 4.3o

Memory Model

The Star12 port supports a special page-zero addressing mode, but conventionally low addresses are used for I/O flags. The kernel makes no special use of page zero, and the modifier @dir is not used.

The use of program bank-switching for application code is supported. All library code has been compiled without the @far modifier, and must therefore appear in unbanked pages. Application code may be placed in banked pages, and may use all API calls including those that entail a bank switch.

ORTI Debugger Support

ORTI is the OSEK Run-Time Interface that is supported by RTA-OSEK for the following debuggers:

- Noral Flex v4.2
- Zap 3.5
- Zap 3.6

Further information about ORTI for RTA-OSEK can be found in the ORTI Guide.

Hardware Environment

RTA-OSEK supports all variants of the Motorola Star12 family.

Interrupt Model

One level of interrupts is supported.

Floating Point Support

The Motorola Star12 uses software floating point only.

Evaluation Board Support

RTA-OSEK for the Motorola Star12 can be used with any evaluation board. An example application is provided to run on a Motorola Barracuda EVB evaluation board. This application can be adapted for other target boards by adjusting the linker command file (to alter the RAM locations) and one source file (if alternative output pins are required).

Functionality

The below table outlines the restrictions on the maximum number of operating system objects allowed by RTA-OSEK.

Note that OSEK specifies that queued activations in an ECC2 sys-

	BCC1	BCC2	ECC1	ECC2
Max no of tasks	16 plus an idle task			
Max tasks per priority	1	16	1	16
Max queued activations	1	255	1	255
Max events per task	n/a	n/a	16	16
Max nested resources	255			
Max alarms	not limited by RTA-OSEK			
Max standard resources	255			
Max internal resources	not limited by RTA-OSEK			
Max application modes	255			

tem are only possible for basic tasks. Where tasks share a priority level, the maximum number of queued activations per priority level is 255.

The number of alarms, tasksets, schedules and schedule arrival-points is only limited by available hardware resources.

Memory Usage

The memory overhead of RTA-OSEK is:

Memory type	Overhead (bytes)
RAM	12
ROM/Flash	72

In addition to the RTOS overhead, each object used by an application has the following memory requirements:

Object	RAM Bytes	ROM Bytes
BCC1 task	0	17
BCC2 task	5	24
ECC1 task	11	29
ECC2 task	13	33
Category 1 ISR	0	0
Category 2 ISR	0	27
Resource	0	10
Internal Resource	0	0
Event	0	2
Alarm	5	17
Counter	2	21
Taskset (RW)	2	2
Taskset (RO)	0	2
Schedule	7	16
Arrivalpoint (RW)	6	6
Arrivalpoint (RO)	0	6

In addition to these static memory requirements each task priority and Category 2 interrupt has a stack overhead (in addition to application stack usage). The single stack model means that this overhead applies to each priority level rather than to each task. Similarly, for Category 2 interrupts this overhead applies for each unique interrupt priority. The below table shows stack usage for these objects.

RTA-OSEK provides an optimization for task termination if the

Object	Stack Bytes
Task priority level	17
Category 2 interrupt	11

user can guarantee that tasks only terminate from their entry function. Tasks that terminate from elsewhere are not eligible for this optimization and duly require 7 more stack bytes per priority level than indicated in the table above.

Performance

The following table gives the key kernel timings for operating system behavior in CPU cycles.

Task Type	Basic	Extended	Ref
Category 1 ISR Latency	15	15	K
Category 2 ISR Latency	18	18	A
Normal Termination	58	143	D
ChainTask	133	306	J
Pre-emption	124	223	C
Triggered by alarm	209	309	F
Schedule	103	197	Q
ReleaseResource	118	214	M
SetEvent	n/a	376	S
Category 2 exit switch latency	84	177	E

All performance figures are for the non-optimized interface to RTA-OSEK. Using the optimized interface will result in shorter execution times for some operations. All tasks use lightweight termination and no pre or post task hooks were specified.

The execution time for every kernel API call is available on request from LiveDevices.

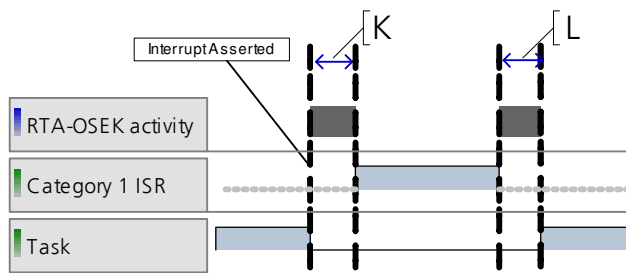


Figure 1 - Category 1 interrupt with return to interrupted task

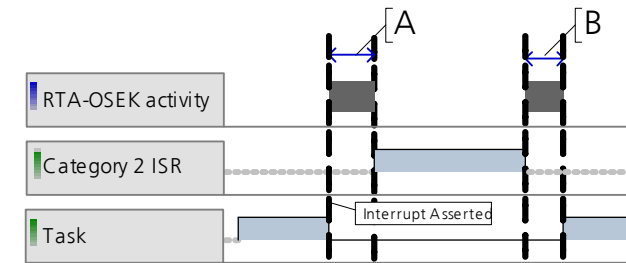


Figure 2 - Category 2 interrupt with return to interrupted task

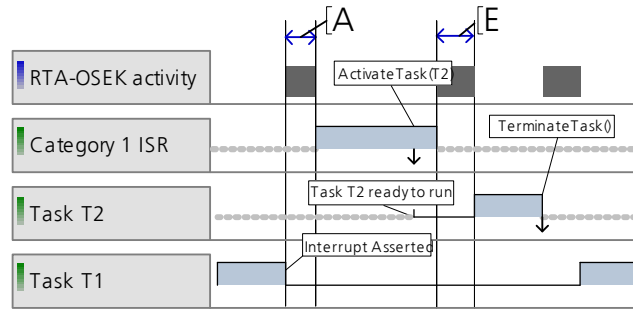


Figure 3 - Category 2 interrupt activates a higher priority task

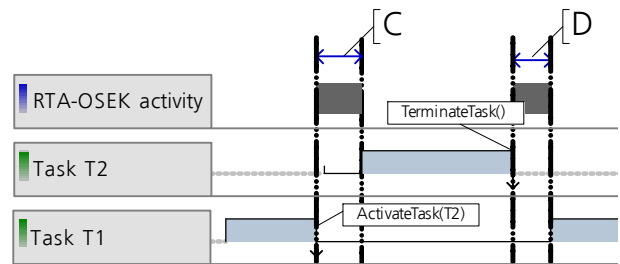


Figure 4 - Task activates a higher priority task

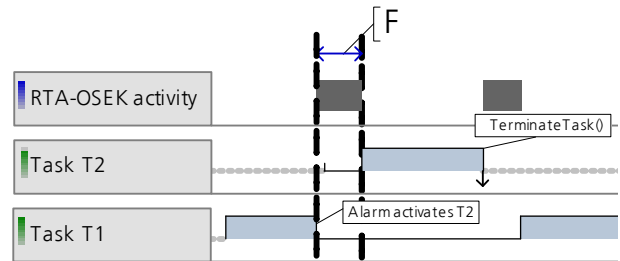


Figure 5 - Alarm activates task

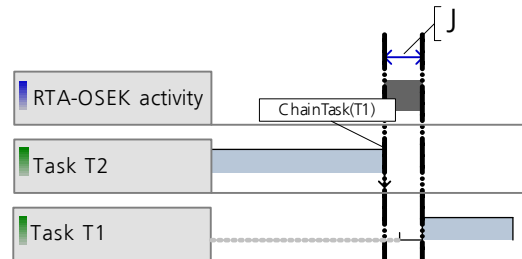


Figure 6 - Task chaining

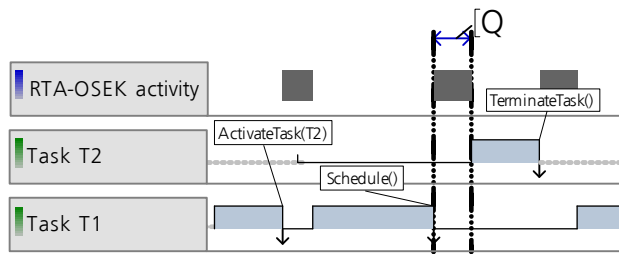


Figure 7 - Schedule() call

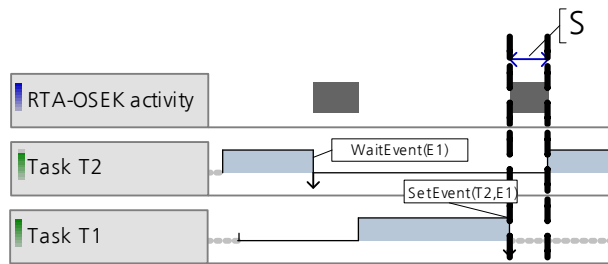


Figure 8 - Activation by SetEvent()

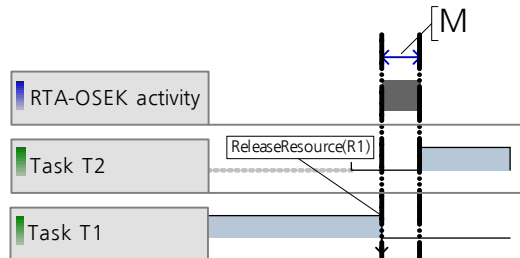


Figure 9 - ReleaseResource()

Benchmarks

The following sections shows benchmarks for RTA-OSEK memory usage for BCC1, BCC2, ECC1 and ECC2 conformant applications. The applications have the following framework:

- 8 tasks plus the idle task
- All basic tasks are lightweight tasks
- 1 Category 2 ISR with a 10ms minimum inter-arrival time
- 1 Counter
- 7 or 8 alarms, all attached to the same counter
- No resources or internal resources
- No hooks
- No schedules
- No tasksets
- Built using standard status

The following table shows the task priority configuration for each benchmark application:

Task/ISR	Stack (bytes)	Period (ms)	BCC1	BCC2	ECC1	ECC2
ISR1	10	10	IPL1	IPL1	IPL1	IPL1
A	10	10	8	8	8	8
B	20	20	7	7	7	7
C	30	20	6	6	6	6
D	40	30	5	5	5	5
E	50	50	4	4	4	4
F	60	80	3	3	3	3
G	70	100	2	2	2	2
H	80	150	1	1	1	2
Idle	10	-	idle	idle	idle	idle

The overhead figures give the ROM and RAM required for RTA-OSEK in addition to that required by the application. The RAM figure is shown split into RAM data and RAM stack.

BCC1

The BCC1 application uses 8 basic tasks with unique priorities.

This application has the following overheads:

Memory usage	Bytes
OS ROM	878
OS RAM	202
comprising RAM data	54
comprising RAM stack	148

BCC2

The BCC2 application uses 8 basic tasks with unique priorities.

Tasks A-G are attached to 7 alarms. Task H is activated multiple times from Task A and has maximum queued activation count of 255.

This application has the following overheads:

Memory usage	Bytes
OS ROM	1090
OS RAM	202
comprising RAM data	52
comprising RAM stack	150

ECC1

The ECC1 application uses 7 basic tasks and 1 extended task with unique priorities. Task H is the extended task and it waits on a single event that is set by basic tasks A-G.

This application has the following overheads:

Memory usage	Bytes
OS ROM	1391
OS RAM	232
comprising RAM data	65
comprising RAM stack	157

ECC2

The ECC2 application uses 6 basic tasks and 2 extended tasks. Tasks G and H are the extended tasks and share a priority. The extended tasks wait on a single event that is set by tasks A-F.

This application has the following overheads:

Memory usage	Bytes
OS ROM	1895
OS RAM	268
comprising RAM data	86
comprising RAM stack	182

Stack Optimization

Using stack optimization with the benchmark example identifies that the following tasks can share internal resources:

"Tasks A, B and C

"Tasks D, E and F

"Tasks G and H

The benefit of this optimization is shown in the following table:

Total Stack Space (bytes)	BCC1	BCC2	ECC1	ECC2
Non-optimized	528	530	537	562
OS Overhead	148	150	157	182
Application Overhead	380	380	380	380
Optimized	243	243	252	252
OS Overhead	63	63	72	72
Application Overhead	180	180	180	180

Order Codes

Name	Order Number
RTA-OSEK Development Seat	F-00K-103-694
RTA-OSEK Support Contract	F-00K-103-706
RTA-OSEK Add-on for Star12 with Cosmic Compiler	F-00K-103-700

Contact addresses:

LiveDevices Ltd.
Atlas House
Link Business Park
Osballdwick Link Road
Osballdwick
York YO10 3JB, Great Britain
Phone+44 (0) 1904-562580
Fax+44 (0) 1904-562581
info@livedevices.com
www.livedevices.com

ETAS GmbH
Borsigstraße 14
70469 Stuttgart, Germany
Phone+49 (711) 89661-102
Fax+49 (711) 89661-106
sales@etas.de
www.etas.de

ETAS Inc.
3021 Miller Road
Ann Arbor, MI 48103, USA
Phone+1 (888) ETAS INC
Fax+1 (734) 997-9449
sales@etas.us
www.etas.us

ETAS K.K.
9-1, Ushikubo 3-chome
Tsuzuki-ku
Yokohama 224-0012, Japan
Phone+81 (45) 912-9550
Fax+81 (45) 912-9552
sales@etas.co.jp
www.etas.co.jp

ETAS S.A.S.
1, place des Etats-Unis
SILIC 307
94588 Rungis Cedex, France
Phone+33 (1) 56700050
Fax+33 (1) 56700051
sales@etas.fr
www.etas.fr

ETAS Korea Co., Ltd.
3F, Samseung Bldg. 61-1
Yangjae-dong, Seocho-gu
Seoul, Korea
Phone+82 (2) 57 47-016
Fax+82 (2) 57 47-120
sales@etas.co.kr
www.etas.co.kr