
RTA-OS

V850E2/GHS Port Guide

Copyright

The data in this document may not be altered or amended without special notification from ETAS GmbH. ETAS GmbH undertakes no further obligation in relation to this document. The software described in it can only be used if the customer is in possession of a general license agreement or single license. Using and copying is only allowed in concurrence with the specifications stipulated in the contract. Under no circumstances may any part of this document be copied, reproduced, transmitted, stored in a retrieval system or translated into another language without the express written permission of ETAS GmbH.

©Copyright 2008-2016 ETAS GmbH, Stuttgart.

The names and designations used in this document are trademarks or brands belonging to the respective owners.

Document: 10499-PG-2.0.24 EN-11-2016

Safety Notice

This ETAS product fulfills standard quality management requirements. If requirements of specific safety standards (e.g. IEC 61508, ISO 26262) need to be fulfilled, these requirements must be explicitly defined and ordered by the customer. Before use of the product, customer must verify the compliance with specific safety standards.

Contents

1	Introduction	7
1.1	About You	8
1.2	Document Conventions	8
1.3	References	9
2	Installing the RTA-OS Port Plug-in	10
2.1	Preparing to Install	10
2.1.1	Hardware Requirements	10
2.1.2	Software Requirements	10
2.2	Installation	11
2.2.1	Installation Directory	11
2.3	Licensing	12
2.3.1	Installing the ETAS License Manager	12
2.3.2	Licenses	13
2.3.3	Installing a Concurrent License Server	14
2.3.4	Using the ETAS License Manager	15
2.3.5	Troubleshooting Licenses	18
3	Verifying your Installation	21
3.1	Checking the Port	21
3.2	Running the Sample Applications	21
4	Port Characteristics	23
4.1	Parameters of Implementation	23
4.2	Configuration Parameters	23
4.2.1	Stack used for C-startup	23
4.2.2	Stack used when idle	24
4.2.3	Stack overheads for ISR activation	24
4.2.4	Stack overheads for ECC tasks	24
4.2.5	Stack overheads for ISR	25
4.2.6	ORTI/Lauterbach	25
4.2.7	ORTI/winIDEA	25
4.2.8	ORTI Stack Fill	25
4.2.9	Interrupt vector entry size	26
4.2.10	Link Type	26
4.2.11	Trust Trap	26
4.2.12	Enable stack repositioning	27
4.2.13	Enable untrusted stack check	27
4.2.14	Block default interrupt	27
4.3	Generated Files	28

5	Port-Specific API	29
5.1	API Calls	29
5.1.1	Os_InitializeVectorTable	29
5.2	Callbacks	30
5.2.1	Os_Cbk_GetAbortStack	30
5.3	Macros	31
5.3.1	CAT1_ISR	31
5.3.2	Os_Clear_x	31
5.3.3	Os_Disable_x	31
5.3.4	Os_Enable_x	32
5.4	Type Definitions	32
5.4.1	Os_StackSizeType	32
5.4.2	Os_StackValueType	32
6	Toolchain	33
6.1	Compiler Versions	33
6.1.1	Green Hills Software v5.1.7D	33
6.2	Options used to generate this guide	34
6.2.1	Compiler	34
6.2.2	Assembler	35
6.2.3	Librarian	36
6.2.4	Linker	36
6.2.5	Debugger	37
7	Hardware	39
7.1	Supported Devices	39
7.2	Register Usage	41
7.2.1	Initialization	41
7.2.2	Modification	41
7.3	Interrupts	42
7.3.1	Interrupt Priority Levels	42
7.3.2	Allocation of ISRs to Interrupt Vectors	43
7.3.3	Vector Table	43
7.3.4	Writing Category 1 Interrupt Handlers	45
7.3.5	Writing Category 2 Interrupt Handlers	45
7.3.6	Default Interrupt	45
7.4	Memory Model	46
7.5	Processor Modes	46
7.6	Stack Handling	46

8	Performance	47
8.1	Measurement Environment	47
8.2	RAM and ROM Usage for OS Objects	47
8.3	Stack Usage	48
8.4	Library Module Sizes	48
8.5	Execution Time	51
8.5.1	Context Switching Time	52
9	Finding Out More	54
10	Contacting ETAS	55
10.1	Technical Support	55
10.2	General Enquiries	55
10.2.1	ETAS Global Headquarters	55
10.2.2	ETAS Local Sales & Support Offices	55

1 Introduction

RTA-OS is a small and fast real-time operating system that conforms to both the AUTOSAR OS (R3.0.1 -> R3.0.7, R3.1.1 -> R3.1.5, R3.2.1 -> R3.2.2, R4.0.1 -> R4.0.3 and R4.1.1 -> R4.2.2) and OSEK/VDX 2.2.3 standards. The operating system is configured and built on a PC, but runs on your target hardware.

This document describes the RTA-OS V850E2/GHS port plug-in that customizes the RTA-OS development tools for the Renesas V850E2 with the GREENHILLS compiler. It supplements the more general information you can find in the *User Guide* and the *Reference Guide*.

The document has two parts. Chapters 2 to 3 help you understand the V850E2/GHS port and cover:

- how to install the V850E2/GHS port plug-in;
- how to configure V850E2/GHS-specific attributes;
- how to build an example application to check that the V850E2/GHS port plug-in works.

Chapters 4 to 8 provide reference information including:

- the number of OS objects supported;
- required and recommended toolchain parameters;
- how RTA-OS interacts with the V850E2, including required register settings, memory models and interrupt handling;
- memory consumption for each OS object;
- memory consumption of each API call;
- execution times for each API call.

For the best experience with RTA-OS it is essential that you read and understand this document.

1.1 About You

You are a trained embedded systems developer who wants to build real-time applications using a preemptive operating system. You should have knowledge of the C programming language, including the compilation, assembling and linking of C code for embedded applications with your chosen toolchain. Elementary knowledge about your target microcontroller, such as the start address, memory layout, location of peripherals and so on, is essential.

You should also be familiar with common use of the Microsoft Windows operating system, including installing software, selecting menu items, clicking buttons, navigating files and folders.

1.2 Document Conventions

The following conventions are used in this guide:

- | | |
|------------------------------------|--|
| Choose File > Open . | Menu options appear in bold, blue characters. |
| Click OK . | Button labels appear in bold characters |
| Press <Enter>. | Key commands are enclosed in angle brackets. |
| The “Open file” dialog box appears | GUI element names, for example window titles, fields, etc. are enclosed in double quotes. |
| Activate(Task1) | Program code, header file names, C type names, C functions and API call names all appear in a monospaced typeface. |
| See Section 1.2 . | Internal document hyperlinks are shown in blue letters . |



Functionality in RTA-OS that might not be portable to other implementations of AUTOSAR OS is marked with the RTA-OS icon.



Important instructions that you must follow carefully to ensure RTA-OS works as expected are marked with a caution sign.

1.3 References

OSEK is a European automotive industry standards effort to produce open systems interfaces for vehicle electronics. For details of the OSEK standards, please refer to:

<http://www.osek-vdx.org>

AUTOSAR (AUTomotive Open System ARchitecture) is an open and standardized automotive software architecture, jointly developed by automobile manufacturers, suppliers and tool developers. For details of the AUTOSAR standards, please refer to:

<http://www.autosar.org>

2 Installing the RTA-OS Port Plug-in

2.1 Preparing to Install

RTA-OS port plug-ins are supplied as a downloadable electronic installation image which you obtain from the ETAS Web Portal. You will have been provided with access to the download when you bought the port. You may optionally have requested an installation CD which will have been shipped to you. In either case, the electronic image and the installation CD contain identical content.



Integration Guidance 2.1: *You must have installed the RTA-OS tools before installing the V850E2/GHS port plug-in. If you have not yet done this then please follow the instructions in the Getting Started Guide.*

2.1.1 Hardware Requirements

You should make sure that you are using at least the following hardware before installing and using RTA-OS on a host PC:

- 1GHz Pentium (or higher) IBM compatible PC.
- 512Mb RAM.
- 500Mb hard disk space.
- CD-ROM or DVD drive (Optional)
- Ethernet card.

2.1.2 Software Requirements

RTA-OS requires that your host PC has one of the following versions of Microsoft Windows installed:

- Windows 2000 (Service Pack 3 or later)
- Windows XP (Service Pack 2 or later)
- Windows Vista
- Windows 7
- Windows 8



Integration Guidance 2.2: *The tools provided with RTA-OS require Microsoft's .NET Framework v2.0 and v4.0 to be installed. You should ensure that these have been installed before installing RTA-OS. The .NET framework is not supplied with RTA-OS but is freely available from <http://www.microsoft.com/net/Download.aspx>.*

The migration of the code from v2.0 to v4.0 will occur over a period of time for performance and maintenance reasons.

2.2 Installation

Target port plug-ins are installed in the same way as the tools:

1. Either

- Double click the executable image; or
- Insert the RTA-OS V850E2/GHS CD into your CD-ROM or DVD drive. If the installation program does not run automatically then you will need to start the installation manually. Navigate to the root directory of your CD/DVD drive and double click `autostart.exe` to start the setup.

2. Follow the on-screen instructions to install the V850E2/GHS port plug-in.

By default, ports are installed into `C:\ETAS\RTA-OS\Targets`. During the installation process, you will be given the option to change the folder to which RTA-OS ports are installed. You will normally want to ensure that you install the port plug-in in the same location that you have installed the RTA-OS tools. You can install different versions of the tools/targets into different directories and they will not interfere with each other.



Integration Guidance 2.3: *Port plug-ins can be installed into any location, but using a non-default directory requires the use of the `--target_include` argument to both `rtaosgen` and `rtaoscfg`. For example:*

```
rtaosgen --target_include:<target_directory>
```

2.2.1 Installation Directory

The installation will create a sub-directory under `Targets` with the name `V850E2GHS_2.0.24`. This contains everything to do with the port plug-in.

Each version of the port installs in its own directory - the trailing `_2.0.24` is the port's version identifier. You can have multiple different versions of the same port installed at the same time and select a specific version in a project's configuration.

The port directory contains:

V850E2GHS.dll - the port plug-in that is used by `rtaosgen` and `rtaoscfg`.

RTA-OS V850E2GHS Port Guide.pdf - the documentation for the port (the document you are reading now).

RTA-OS V850E2GHS Release Note.pdf - the release note for the port.

This document provides information about the port plug-in release, including a list of changes from previous releases and a list of known limitations.

There may be other port-specific documentation supplied which you can also find in the root directory of the port installation. All user documentation is distributed in PDF format which can be read using Adobe Acrobat Reader. Adobe Acrobat Reader is not supplied with RTA-OS but is freely available from <http://www.adobe.com>.

2.3 Licensing

RTA-OS is protected by FLEXnet licensing technology. You will need a valid license key in order to use RTA-OS.

Licenses for the product are managed using the ETAS License Manager which keeps track of which licenses are installed and where to find them. The information about which features are required for RTA-OS and any port plug-ins is stored as license signature files that are stored in the folder <install_folder>\bin\Licenses.

The ETAS License Manager can also tell you key information about your licenses including:

- Which ETAS products are installed
- Which license features are required to use each product
- Which licenses are installed
- When licenses expire
- Whether you are using a local or a server-based license

Figure 2.1 shows the ETAS License Manager in operation.

2.3.1 Installing the ETAS License Manager



Integration Guidance 2.4: *The ETAS License Manager must be installed for RTA-OS to work. It is highly recommended that you install the ETAS License Manager during your installation of RTA-OS.*

The installer for the ETAS License Manager contains two components:

1. the ETAS License Manager itself;

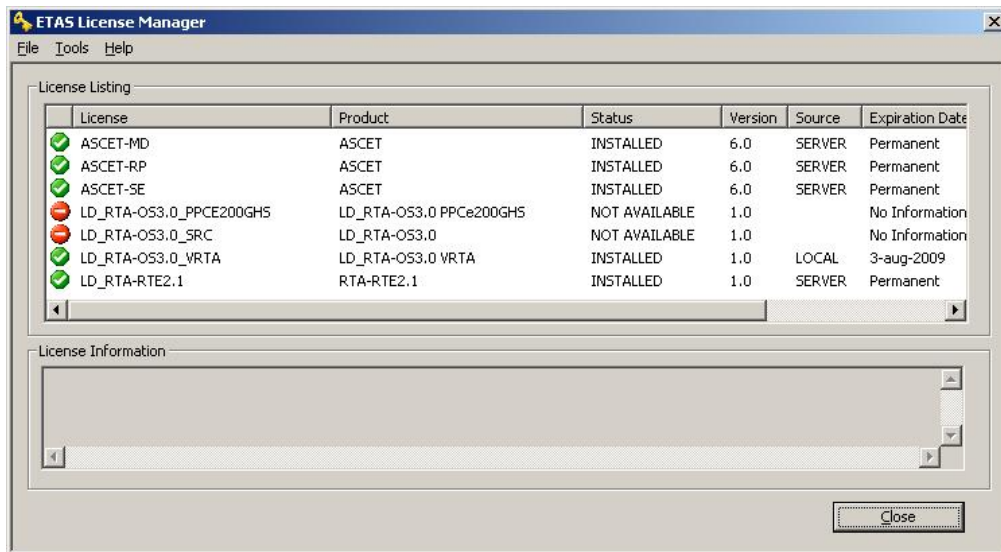


Figure 2.1: The ETAS License manager

2. a set of re-distributable FLEXnet utilities. The utilities include the software and instructions required to setup and run a FLEXnet license server manager if concurrent licenses are required (see Sections 2.3.2 and 2.3.3 for further details)

During the installation of RTA-OS you will be asked if you want to install the ETAS License Manager. If not, you can install it manually at a later time by running `<install_folder>\LicenseManager\LicensingStandaloneInstallation.exe`.

Once the installation is complete, the ETAS License Manager can be found in `C:\Program Files\Common Files\ETAS\Licensing`.

After it is installed, a link to the ETAS License Manager can be found in the Windows Start menu under **Programs → ETAS → License Management → ETAS License Manager**.

2.3.2 Licenses

When you install RTA-OS for the first time the ETAS License Manager will allow the software to be used in *grace mode* for seven days. Once the grace mode period has expired, a license key must be installed. If a license key is not available, please contact your local ETAS sales representative. Contact details can be found in Chapter 10.

You should identify which type of license you need and then provide ETAS with the appropriate information as follows:

Machine-named licenses allows RTA-OS to be used by any user logged onto the PC on which RTA-OS and the machine-named license is installed.

A machine-named license can be issued by ETAS when you provide the host ID (Ethernet MAC address) of the host PC

User-named licenses allow the named user (or users) to use RTA-OS on any PC in the network domain.

A user-named license can be issued by ETAS when you provide the Windows user-name for your network domain.

Concurrent licenses allow any user on any PC up to a specified number of users to use RTA-OS. Concurrent licenses are sometimes called *floating* licenses because the license can *float* between users.

A concurrent license can be issued by ETAS when you provide the following information:

1. The name of the server
2. The Host ID (MAC address) of the server.
3. The TCP/IP port over which your FLEXnet license server will serve licenses. A default installation of the FLEXnet license server uses port 27000.

You can use the ETAS License Manager to get the details that you must provide to ETAS when requesting a machine-named or user-named license and (optionally) store this information in a text file.

Open the ETAS License Manager and choose **Tools → Obtain License Info** from the menu. For machine-named licenses you can then select the network adaptor which provides the Host ID (MAC address) that you want to use as shown in Figure 2.2. For a user-based license, the ETAS License Manager automatically identifies the Windows username for the current user.

Selecting “Get License Info” tells you the Host ID and User information and lets you save this as a text file to a location of your choice.

2.3.3 Installing a Concurrent License Server

Concurrent licenses are allocated to client PCs by a FLEXnet license server manager working together with a vendor daemon. The vendor daemon for ETAS is called ETAS.exe. A copy of the vendor daemon is placed on disk when you install the ETAS License Manager and can be found in:

C:\Program Files\Common Files\ETAS\Licensing\Utility

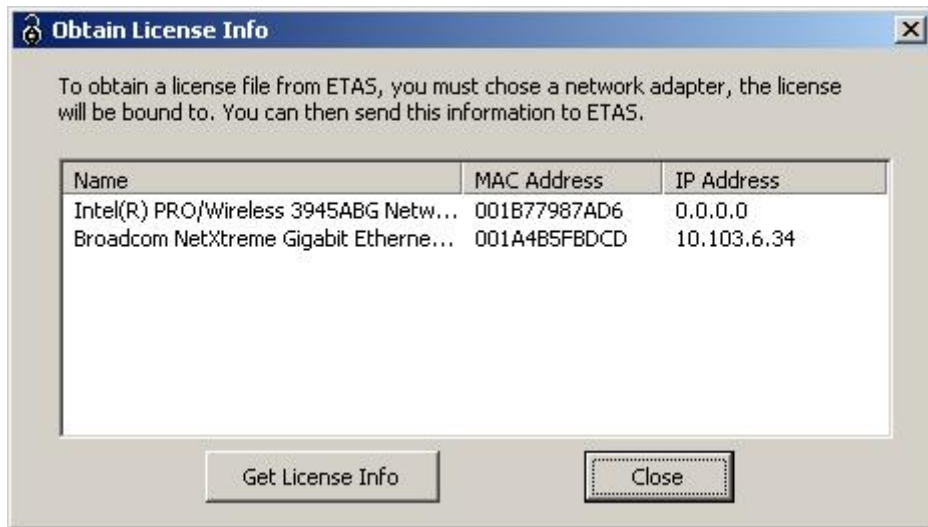


Figure 2.2: Obtaining License Information

To work with an ETAS concurrent license, a license server must be configured which is accessible from the PCs wishing to use a license. The server must be configured with the following software:

- FLEXnet license server manager;
- ETAS vendor daemon (ETAS.exe);

It is also necessary to install your concurrent license on the license server.

In most organizations there will be a single FLEXnet license server manager that is administered by your IT department. You will need to ask your IT department to install the ETAS vendor daemon and the associated concurrent license.

If you do not already have a FLEXnet license server then you will need to arrange for one to be installed. A copy of the FLEXnet license server, the ETAS vendor daemon and the instructions for installing and using the server (LicensingEndUserGuide.pdf) are placed on disk when you install the ETAS License manager and can be found in:

C:\Program Files\Common Files\ETAS\Licensing\Utility

2.3.4 Using the ETAS License Manager

If you try to run RTA-OS without a valid license, you will be given the opportunity to start the ETAS License Manager and select a license.

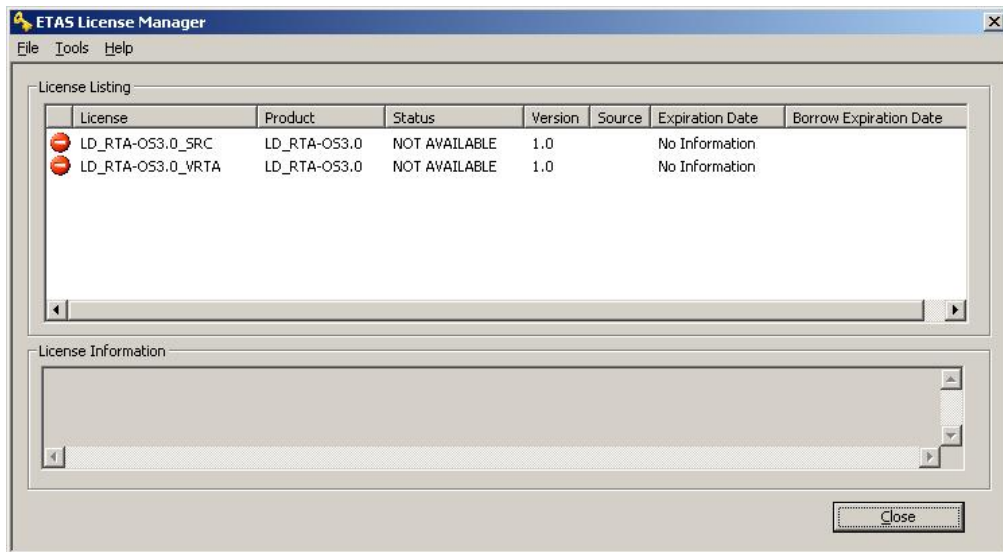


Figure 2.3: Unlicensed RTA-OS Installation

When the ETAS License Manager is launched, it will display the RTA-OS license state as NOT AVAILABLE and you will not be able to use any of the tools until a valid license is installed. This is shown in Figure 2.3.

License Key Installation

License keys are supplied in an ASCII text file, which will be sent to you on completion of a valid license agreement.

If you have a machine-based or user-based license key then you can simply install the license by opening the ETAS License Manager and selecting **File → Add License File** menu.

If you have a concurrent license key then you will need to create a license stub file that tells the client PC to look for a license on the FLEXnet server as follows:

1. create a copy of the concurrent license file
2. open the copy of the concurrent license file and delete every line except the one starting with SERVER
3. add a new line containing USE_SERVER
4. add a blank line
5. save the file

The file you create should look something like this:

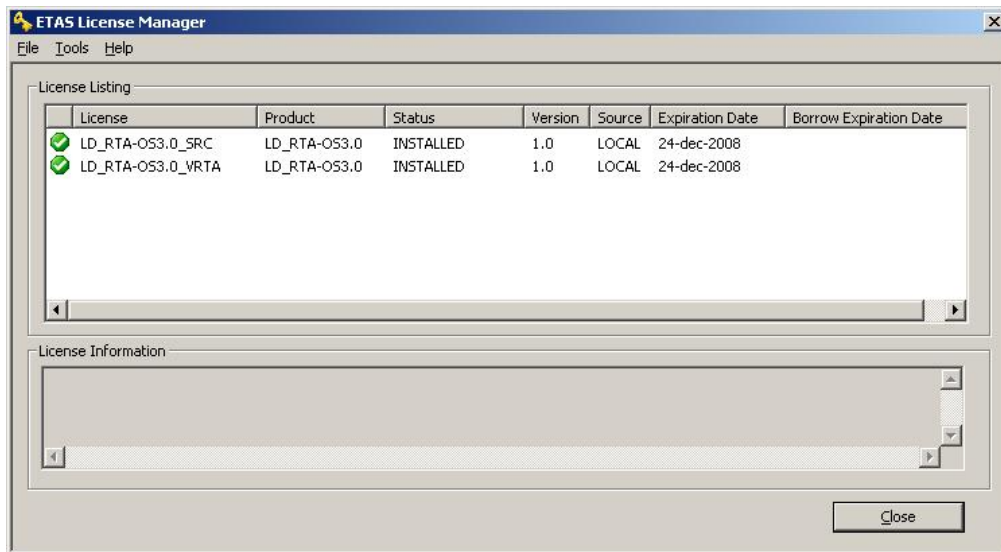


Figure 2.4: Licensed features for RTA-OS

```
SERVER <server name> <MAC address> <TCP/IP Port>
USE_SERVER

```

Once you have create the license stub file you can install the license by opening the ETAS License Manager and selecting **File → Add License File** menu and choosing the license stub file.

License Key Status

When a valid license has been installed, the ETAS License Manager will display the license version, status, expiration date and source as shown in Figure 2.4.

When a license is installed by the ETAS License Manager it is placed in: C:\Documents and Settings\All Users\Application Data\ETAS\FlexNet

Borrowing a concurrent license

If you use a concurrent license and need to use RTA-OS on a PC that will be disconnected from the network (for example, you take a demonstration to a customer site), then the concurrent license will not be valid once you are disconnected.

To address this problem, the ETAS License Manager allows you to temporarily borrow a license from the license server.

To borrow a license:

1. Right click on the license feature you need to borrow.
2. Select “Borrow License”
3. From the calendar, choose the date that the borrowed license should expire.
4. Click “OK”

The license will automatically expire when the borrow date elapses. A borrowed license can also be returned before this date. To return a license:

1. Reconnect to the network;
2. Right-click on the license feature you have borrowed;
3. Select “Return License”.

2.3.5 Troubleshooting Licenses

RTA-OS tools will report an error if you try to use a feature for which a correct license key cannot be found. If you think that you should have a license for a feature but the RTA-OS tools appear not to work, then the following troubleshooting steps should be followed before contacting ETAS:

Can the ETAS License Manager see the license?

The ETAS License Manager must be able to see a valid license key for each product or product feature you are trying to use.

You can check what the ETAS License Manager can see by starting it from the **Help → License Manager...** menu option in **rtaoscfg** or directly from the Windows Start Menu - **Start → ETAS → License Management → ETAS License Manager**.

The ETAS License Manager lists all license features and their status. Valid licenses have status INSTALLED. Invalid licenses have status NOT AVAILABLE.

Is the license valid?

You may have been provided with a time-limited license (for example, for evaluation purposes) and the license may have expired. You can check that the Expiration Date for your licensed features to check that it has not elapsed using the ETAS License Manager.

If a license is due to expire within the next 30 days, the ETAS License Manager will use a warning triangle to indicate that you need to get a new license. Figure 2.5 shows that the license features LD_RTA-0S3.0_VRTA and LD_RTA-0S3.0_SRC are due to expire.

If your license has elapsed then please contact your local ETAS sales representative to discuss your options.

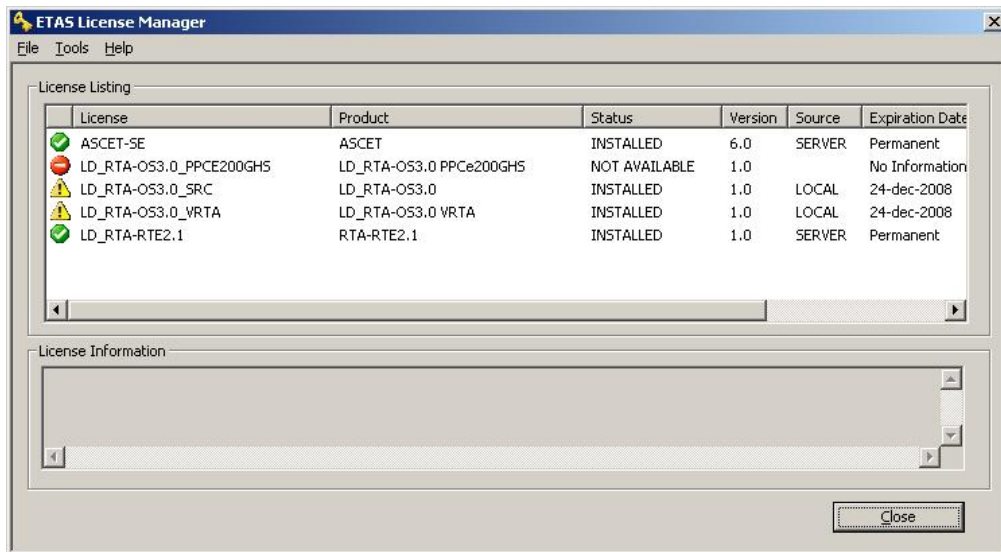


Figure 2.5: Licensed features that are due to expire

Does the Ethernet MAC address match the one specified?

If you have a machine based license then it is locked to a specific MAC address. You can find out the MAC address of your PC by using the ETAS License Manager (**Tools → Obtain License Info**) or using the Microsoft program **ipconfig /all** at a Windows Command Prompt.

You can check that the MAC address in your license file by opening your license file in a text editor and checking that the HOSTID matches the MAC address identified by the ETAS License Manager or the *Physical Address* reported by **ipconfig /all**.

If the HOSTID in the license file (or files) does not match your MAC address then you do not have a valid license for your PC. You should contact your local ETAS sales representative to discuss your options.

Is your Ethernet Controller enabled?

If you use a laptop and RTA-OS stops working when you disconnect from the network then you should check your hardware settings to ensure that your Ethernet controller is not turned off to save power when a network connection is not present. You can do this using Windows Control Panel. Select **System → Hardware → Device Manager** then select your Network Adapter. Right click to open **Properties** and check that the Ethernet controller is not configured for power saving in **Advanced** and/or **Power Management** settings.

Is the FlexNet License Server visible?

If your license is served by a FlexNet license server, then the ETAS License Manager will report the license as NOT AVAILABLE if the license server cannot be accessed.

You should contact your IT department to check that the server is working correctly.

Still not fixed?

If you have not resolved your issues, after confirming these points above, please contact ETAS technical support. The contact address is provided in Section [10.1](#). You must provide the contents and location of your license file and your Ethernet MAC address.

3 Verifying your Installation

Now that you have installed both the RTA-OS tools and a port plug-in and have obtained and installed a valid license key you can check that things are working.

3.1 Checking the Port

The first thing to check is that the RTA-OS tools can see the new port. You can do this in two ways:

1. use the **rtaosgen** tool

You can run the command **rtaosgen --target:?** to get a list of available targets, the versions of each target and the variants supported, for example:

```
RTA-OS Code Generator
Version p.q.r.s, Copyright © ETAS nnnn
Available targets:
  TriCoreHighTec_n.n.n [TC1797...]
  VRTA_n.n.n [MinGW,VS2005,VS2008,VS2010]
```

2. use the **rtaoscfg** tool

The second way to check that the port plug-in can be seen is by starting **rtaoscfg** and selecting **Help → Information...** drop down menu. This will show information about your complete RTA-OS installation and license checks that have been performed.



Integration Guidance 3.1: *If the target port plug-ins have been installed to a non-default location, then the `--target_include` argument must be used to specify the target location.*

If the tools can see the port then you can move on to the next stage – checking that you can build an RTA-OS library and use this in a real program that will run on your target hardware.

3.2 Running the Sample Applications

Each RTA-OS port is supplied with a set of sample applications that allow you to check that things are running correctly. To generate the sample applications:

1. Create a new *working* directory in which to build the sample applications.
2. Open a Windows command prompt in the new directory.

3. Execute the command:

```
rtaosgen --target:<your target> --samples:[Applications]
```

e.g.

```
rtaosgen --target:[MPC5777Mv2]PPCe200HighTec_5.0.8  
--samples:[Applications]
```

You can then use the build.bat and run.bat files that get created for each sample application to build and run the sample. For example:

```
cd Samples\Applications\HelloWorld  
build.bat  
run.bat
```

Remember that your target toolchain must be accessible on the Windows PATH for the build to be able to run successfully.



Integration Guidance 3.2: *It is strongly recommended that you build and run at least the Hello World example in order to verify that RTA-OS can use your compiler toolchain to generate an OS kernel and that a simple application can run with that kernel.*

For further advice on building and running the sample applications, please consult your *Getting Started Guide*.

4 Port Characteristics

This chapter tells you about the characteristics of RTA-OS for the V850E2/GHS port.

4.1 Parameters of Implementation

To be a valid OSEK or AUTOSAR OS, an implementation must support a minimum number of OS objects. The following table specifies the *minimum* numbers of each object required by the standards and the *maximum* number of each object supported by RTA-OS for the V850E2/GHS port.

Parameter	Required	RTA-OS
Tasks	16	1024
Tasks not in SUSPENDED state	16	1024
Priorities	16	1024
Tasks per priority	-	1024
Queued activations per priority	-	4294967296
Events per task	8	32
Software Counters	8	4294967296
Hardware Counters	-	4294967296
Alarms	1	4294967296
Standard Resources	8	4294967296
Linked Resources	-	4294967296
Nested calls to GetResource()	-	4294967296
Internal Resources	2	no limit
Application Modes	1	4294967296
Schedule Tables	2	4294967296
Expiry Points per Schedule Table	-	4294967296
OS Applications	-	4294967295
Trusted functions	-	4294967295
Spinlocks (multicore)	-	4294967295
Register sets	-	4294967296

4.2 Configuration Parameters

Port-specific parameters are configured in the **General → Target** workspace of **rtaoscfg**, under the “Target-Specific” tab.

The following sections describe the port-specific configuration parameters for the V850E2/GHS port, the name of the parameter as it will appear in the XML configuration and the range of permitted values (where appropriate).

4.2.1 Stack used for C-startup

XML name SpPreStartOS

Description

The amount of stack already in use at the point that StartOS() is called. This value is simply added to the total stack size that the OS needs to support all tasks and interrupts at run-time. Typically you use this to obtain the amount of stack that the linker must allocate. The value does not normally change if the OS configuration changes.

4.2.2 Stack used when idle

XML name SpStartOS

Description

The amount of stack used when the OS is in the idle state (typically inside Os_Cbk_Idle()). This is just the difference between the stack used at the point that Os_StartOS() is called and the stack used when no task or interrupt is running. This can be zero if Os_Cbk_Idle() is not used. It must include the stack used by any function called while in the idle state. The value does not normally change if the OS configuration changes.

4.2.3 Stack overheads for ISR activation

XML name SpIDisp

Description

The extra amount of stack needed to activate a task from within an ISR. If a task is activated within a Category 2 ISR, and that task has a higher priority than any currently running task, then for some targets the OS may need to use marginally more stack than if it activates a task that is of lower priority. This value accounts for that. On most targets this value is zero. This value is used in worst-case stack size calculations. The value may change if significant changes are made to the OS configuration. e.g. STANDARD/EXTENDED, SC1/2/3/4.

4.2.4 Stack overheads for ECC tasks

XML name SpECC

Description

The extra amount of stack needed to start an ECC task. ECC tasks need to save slightly more state on the stack when they are started than BCC tasks. This value contains the difference. The value may change if significant changes are made to the OS configuration. e.g. STANDARD/EXTENDED, SC1/2/3/4.

4.2.5 Stack overheads for ISR

XML name SpPreemption

Description

The amount of stack used to service a Category 2 ISR. When a Category 2 ISR interrupts a task, it usually places some data on the stack. If the ISR measures the stack to determine if the preempted task has exceeded its stack budget, then it will overestimate the stack usage unless this value is subtracted from the measured size. The value is also used when calculating the worst-case stack usage of the system. Be careful to set this value accurately. If its value is too high then when the subtraction occurs, 32-bit underflow can occur and cause the OS to think that a budget overrun has been detected. The value may change if significant changes are made to the OS configuration. e.g. STANDARD/EXTENDED, SC1/2/3/4.

4.2.6 ORTI/Lauterbach

XML name Orti22Lauterbach

Description

Enables ORTI generation for the Lauterbach debugger ('TRUE'=Generate ORTI. 'FALSE'=No ORTI (default).).

Settings

Value	Description
TRUE	Generate ORTI
FALSE	No ORTI (default)

4.2.7 ORTI/winIDEA

XML name Orti21winIDEA

Description

Enables ORTI generation for the winIDEA debugger ('TRUE'=Generate ORTI. 'FALSE'=No ORTI (default).).

Settings

Value	Description
TRUE	Generate ORTI
FALSE	No ORTI (default)

4.2.8 ORTI Stack Fill

XML name OrtiStackFill

Description

Expands ORTI information to cover stack address, size and fill pattern details to support debugger stack usage monitoring ('TRUE'=Support ORTI stack tracking. 'FALSE'=ORTI stack tracking unsupported (default)).

Settings

Value	Description
TRUE	Support ORTI stack tracking
FALSE	ORTI stack tracking unsupported (default)

4.2.9 Interrupt vector entry size

XML name InterruptVectorSize

Description

Select the size of the interrupt vector entries

Settings

Value	Description
16	16 Bytes traditional hardware vectors (default)
4	4 Bytes single demux interrupt

4.2.10 Link Type

XML name OsLinkerModel

Description

Select the type of map used in linker samples.

Settings

Value	Description
RAM	Code/data in RAM (default)
FLASH	Code in FLASH, data in RAM

4.2.11 Trust Trap

XML name OsTrustTrap

Description

When there is untrusted code in an application RTA-OS needs to reserve one of the two CPU trap vectors to switch between trusted and untrusted code. This option selects which is used. This functionality must be supported if a user provided TRAP handlers are used in such applications.

Settings

Value	Description
0x40	TRAP 0x0-0xF instructions used by RTA-OS (default)
0x50	TRAP 0x10-0x1F instructions used by RTA-OS

4.2.12 Enable stack repositioning

XML name AlignUntrustedStacks

Description

Use to support realignment of the stack for untrusted code when there are MPU protection region granularity issues. Refer to the documentation for `Os_Cbk_SetMemoryAccess`

Settings

Value	Description
TRUE	Support repositioning
FALSE	Normal behavior (default)

4.2.13 Enable untrusted stack check

XML name DistrustStacks

Description

Extra code can be placed in interrupt handlers to detect when untrusted code has an illegal stack pointer value. Also exception handlers run on a private stack (Refer to the documentation for `Os_Cbk_GetAbortStack`). This has a small performance overhead, so is made optional.

Settings

Value	Description
TRUE	Perform the checks
FALSE	Do not check (default)

4.2.14 Block default interrupt

XML name block_default_interrupt

Description

Where a default interrupt is specified, it will normally execute if a spurious interrupt fires. This option can change this behavior by changing the priority assigned to unused interrupt sources.

Settings

Value	Description
TRUE	Block the default interrupt
FALSE	Allow the default interrupt handler to run if a spurious interrupt fires (default)

4.3 Generated Files

The following table lists the files that are generated by **rtaosgen** for all ports:

Filename	Contents
<code>Os.h</code>	The main include file for the OS.
<code>Os_Cfg.h</code>	Declarations of the objects you have configured. This is included by <code>Os.h</code> .
<code>Os_MemMap.h</code>	AUTOSAR memory mapping configuration used by RTA-OS to merge with the system-wide <code>MemMap.h</code> file in AUTOSAR versions 4.0 and earlier. From AUTOSAR version 4.1, <code>Os_MemMap.h</code> is used by the OS instead of <code>MemMap.h</code> .
<code>RTAOS.<lib></code>	The RTA-OS library for your application. The extension <code><lib></code> depends on your target.
<code>RTAOS.<lib>.sig</code>	A signature file for the library for your application. This is used by rtaosgen to work out which parts of the kernel library need to be rebuilt if the configuration has changed. The extension <code><lib></code> depends on your target.
<code><projectname>.log</code>	A log file that contains a copy of the text that the tool and compiler sent to the screen during the build process.

5 Port-Specific API

The following sections list the port-specific aspects of the RTA-OS programmers reference for the V850E2/GHS port that are provided either as:

- additions to the material that is documented in the *Reference Guide*; or
- overrides for the material that is documented in the *Reference Guide*. When a definition is provided by both the *Reference Guide* and this document, the definition provided in this document takes precedence.

5.1 API Calls

5.1.1 Os_InitializeVectorTable

Initialize the EICn registers.

Syntax

```
void Os_InitializeVectorTable(void)
```

Description

Os_InitializeVectorTable() initializes the interrupt controller registers and priorities according to the requirements of the project configuration.

The EICn registers for interrupts declared in the project configuration are modified so that their priority matches that expected by RTA-OS. The ICn mask bits are not cleared, which can be done later using the provided macros (i.e. Os_Enable_x). The EICn registers of interrupt channels not declared in the project configuration are not modified by this function. The vector table base address register is set to match the location of Os_interrupt_vectors. The PMR register is set to block all Category 2 interrupts (as these should only trigger after StartOS()) but allow Category 1 interrupts to fire. The PSW.ID bit is also set to allow EI interrupts. Os_InitializeVectorTable() should be called before StartOS(). It should be called even if 'Suppress Vector Table Generation' is set to TRUE.

Example

```
Os_InitializeVectorTable();
```

See Also

StartOS

5.2 Callbacks

5.2.1 Os_Cbk_GetAbortStack

Callback routine to provide the start address of the stack to use to handle exceptions.

Syntax

```
FUNC(void *, {memclass}) Os_Cbk_GetAbortStack(void)
```

Return Values

The call returns values of type **void ***.

Description

Untrusted code can misbehave and cause a protection exception. When this happens, AUTOSAR requires that ProtectionHook is called and the task, ISR or OS Application must be terminated.

It is possible that at the time of the fault the stack pointer is invalid. For this reason, if 'Enable untrusted stack check' is configured, RTA-OS will call Os_Cbk_GetAbortStack to get the address of a safe area of memory that it should use for the stack while it performs this processing.

Maskable interrupts will be disabled during this process so the stack only needs to be large enough to perform the ProtectionHook.

A default implementation of Os_Cbk_GetAbortStack is supplied in the RTA-OS library that will place the abort stack at the starting stack location of the untrusted code.

In systems that use the Os_Cbk_SetMemoryAccess callback, the return value is the last stack location returned in ApplicationContext from Os_Cbk_SetMemoryAccess. This is to avoid having to reserve memory. Note that this relies on Os_Cbk_SetMemoryAccess having been called at least once on that core otherwise zero will be returned. (The stack will not get adjusted if zero is returned.) Otherwise the default implementation returns the address of an area of static memory that is reserved for sole use by the abort stack.

Note: memclass is OS_APPL_CODE for AUTOSAR 3.x, OS_CALLOUT_CODE for AUTOSAR 4.0, OS_OS_CBK_GETABORTSTACK_CODE for AUTOSAR 4.1.

Example

```
FUNC(void *, {memclass}) Os_Cbk_GetAbortStack(void) {  
    static uint32 abortstack[20U];  
    return &abortstack[20U];  
}
```

Required when

The callback must be present if 'Enable untrusted stack check' is configured and there are untrusted OS Applications.

5.3 Macros

5.3.1 CAT1_ISR

Macro that should be used to create a Category 1 ISR entry function. This macro exists to help make your code portable between targets.

Example

```
CAT1_ISR(MyISR) {...}
```

5.3.2 Os_Clear_x

Use of the `Os_Clear_x()` will clear the interrupt request bit of the EI level interrupt control register for the named interrupt channel. The macro can be called using either the EI channel number or the RTA-OS configured vector name. In the example, this is `Os_Clear_EI_Channel_20()` and `Os_Clear_Millisecond()` respectively. To use the `Os_Clear_x` macro the file `Os_ConfigInterrupts.h` must be included through the use of `#include`. The macro is provided so the interrupt channel can be cleared without corrupting the interrupt priority value configured by calling `Os_InitializeVectorTable()`. It may not be used by untrusted code.

Example

```
Os_Clear_EI_Channel_20()  
Os_Clear_Millisecond()
```

5.3.3 Os_Disable_x

Use of the `Os_Disable_x` macro will disable the named interrupt channel. The macro can be called using either the EI channel number or the RTA-OS configured vector name. In the example, this is `Os_Disable_EI_Channel_20()` and `Os_Disable_Millisecond()` respectively. To use the `Os_Disable_x` macro the file `Os_ConfigInterrupts.h` must be included through the use of `#include`. The macro is provided so the interrupt channel can be masked without corrupting the interrupt priority value configured by calling `Os_InitializeVectorTable()`. It may not be used by untrusted code.

Example

```
Os_Disable_EI_Channel_20()  
Os_Disable_Millisecond()
```

5.3.4 Os_Enable_x

Use of the `Os_Enable_x` macro will enable the named interrupt channel. The macro can be called using either the EI channel number or the RTA-OS configured vector name. In the example, this is `Os_Enable_EI_Channel_20()` and `Os_Enable_Millisecond()` respectively. To use the `Os_Enable_x` macro the file `Os_ConfigInterrupts.h` must be included through the use of `#include`. The macro is provided so the interrupt channel can be enabled without corrupting the interrupt priority value configured by calling `Os_InitializeVectorTable()`. It may not be used by untrusted code.

Example

```
Os_Enable_EI_Channel_20()  
Os_Enable_Millisecond()
```

5.4 Type Definitions

5.4.1 Os_StackSizeType

An unsigned value representing an amount of stack in bytes.

Example

```
Os_StackSizeType stack_size;  
stack_size = Os_GetStackSize(start_position, end_position);
```

5.4.2 Os_StackValueType

An unsigned value representing the position of the stack pointer (ESP).

Example

```
Os_StackValueType start_position;  
start_position = Os_GetStackValue();
```


6 Toolchain

This chapter contains important details about RTA-OS and the GREENHILLS toolchain. A port of RTA-OS is specific to both the target hardware and a specific version of the compiler toolchain. You must make sure that you build your application with the supported toolchain.

In addition to the version of the toolchain, RTA-OS may use specific tool options (switches). The options are divided into three classes:

kernel options are those used by **rtaosgen** to build the RTA-OS kernel.

mandatory options must be used to build application code so that it will work with the RTA-OS kernel.

forbidden options must not be used to build application code.

Any options that are not explicitly forbidden can be used by application code providing that they do not conflict with the kernel and mandatory options for RTA-OS.

Integration Guidance 6.1: *ETAS has developed and tested RTA-OS using the tool versions and options indicated in the following sections. Correct operation of RTA-OS is only covered by the warranty in the terms and conditions of your deployment license agreement when using identical versions and options. If you choose to use a different version of the toolchain or an alternative set of options then it is your responsibility to check that the system works correctly. If you require a statement that RTA-OS works correctly with your chosen tool version and options then please contact ETAS to discuss validation possibilities.*



6.1 Compiler Versions

This port of RTA-OS has been developed to work with the following compiler(s):

6.1.1 Green Hills Software v5.1.7D

Ensure that `ccv850e.exe` is on the path and that the appropriate environment variables have been set.

Tested on Green Hills Software, MULTI v5.1.7D (patch 2)

If you require support for a compiler version not listed above, please contact ETAS.

6.2 Options used to generate this guide

6.2.1 Compiler

Name ecom800.exe

Version v5.1.7D-P20 v800 Release Date Thu May 19 16:13:22 PDT 2011

Options

Kernel Options

The following options were used to build the RTA-OS kernel for the configuration that was used to generate the performance figures in this document. If you select different target options, then the values used to build the kernel might change. You can run a Configuration Summary report to check the values used for your configuration.

- cpu=V850e2v3** Specify the target processor instruction set
- fsoft** Floating-point operations performed in software
- ignore_callt_state_in_interrupts** CTPSW and CTPC registers are not saved in interrupt routines
- large_sda** Generate 23-bit SDA relocations for load/store instructions
- nofarcalls** Disable generation of far function calls
- nofloatio** No floating-point operations in stdio routines
- no_callt** Disable use of the callt instruction
- 0general** Optimize strategy for both speed and program size
- 0nounroll** Prevent the optimizer from loop unrolling
- prepare_dispose** Allow V850E prepare and dispose instructions
- registermode=32** No registers are reserved for user
- reserve_r2** Reserve R2
- shorten_loads** Convert 23-bit SDA relocations to 16-bit in load/store instructions when possible
- sda=0** Do not use SDA by default
- no_commons** Allocate uninitialized global variables to a section and initialize them to zero at program startup
- prototype_errors** Report an error for functions with no prototype

-quit_after_warnings Treat all warnings as errors

-short_enum Store enumerations in the smallest possible type

Mandatory Options for Application Code

The following options were mandatory for application code used with the configuration that was used to generate the performance figures in this document. If you select different target options, then the values required by application code might change. You can run a Configuration Summary report to check the values used for your configuration.

- The same options as for compilation

Forbidden Options for Application Code

The following options were forbidden for application code used with the configuration that was used to generate the performance figures in this document. If you select different target options, then the forbidden values might change. You can run a Configuration Summary report to check the values used for your configuration.

- Any options that conflict with kernel options for example:

-callt Use callt instruction in function prologues/epilogues

-registermode=22 Restrict the compiler to using 22 general purpose registers

-registermode=26 Restrict the compiler to using 26 general purpose registers

-globalreg Reserve register to hold global variable

-ga Use r28 as a frame pointer

-r20has255 Register r20 is set to the value 255

-r21has65535 Register r21 is set to the value 65535

-no_short_enum Store enumerations as integers

6.2.2 Assembler

Name as850.exe

Version v5.1.7D v800 Release Date Tue Jun 29 13:37:32 PDT 2010

Options

Kernel Options

The following options were used to build the RTA-OS kernel for the configuration that was used to generate the performance figures in this document. If you select different target options, then the values used to build the kernel might change. You can run a Configuration Summary report to check the values used for your configuration.

- The same options as for compilation

Mandatory Options for Application Code

The following options were mandatory for application code used with the configuration that was used to generate the performance figures in this document. If you select different target options, then the values required by application code might change. You can run a Configuration Summary report to check the values used for your configuration.

- The same options as for compilation

Forbidden Options for Application Code

The following options were forbidden for application code used with the configuration that was used to generate the performance figures in this document. If you select different target options, then the forbidden values might change. You can run a Configuration Summary report to check the values used for your configuration.

- Any options that conflict with kernel options

6.2.3 Librarian

Name ax.exe
Version v5.1.7 V800 Release Date Mon Jan 25 23:42:46 PST 2010

6.2.4 Linker

Name elxr.exe
Version v5.1.7D-P16 v800 Release Date Wed Mar 09 14:25:30 PST 2011

Options

Kernel Options

The following options were used to build the RTA-OS kernel for the configuration that was used to generate the performance figures in this document. If you select different target options, then the values used to build the kernel might change. You can run a Configuration Summary report to check the values used for your configuration.

- cpu=V850e2v3** Specify the target processor instruction set
- e Os_sample_reset** Set the application entry function
- fsoft** Floating-point operations performed in software
- lnk="-Manx -v -Qn"** Create map file, verbose, skip comment section

Mandatory Options for Application Code

The following options were mandatory for application code used with the configuration that was used to generate the performance figures in this document. If you select different target options, then the values required by application code might change. You can run a Configuration Summary report to check the values used for your configuration.

- The same options as for the kernel

Forbidden Options for Application Code

The following options were forbidden for application code used with the configuration that was used to generate the performance figures in this document. If you select different target options, then the forbidden values might change. You can run a Configuration Summary report to check the values used for your configuration.

- Any options that conflict with kernel options

6.2.5 Debugger

Name Lauterbach TRACE32
Version Build 10654 or later

Notes on using ORTI with the debugger

ORTI with the Lauterbach debugger

When ORTI information for the Trace32 debugger is enabled entry and exit times for Category 1 interrupts are increased by a few cycles to support tracking of Category 1 interrupts by the debugger.

ORTI Stack Fill with the Lauterbach debugger

The 'ORTI Stack Fill' target option is provided to extend the ORTI support to allow evaluation of unused stack space. The Task.Stack.View command can then be used in the Trace32 debugger.

The following must be added to an application to ensure correct operation (as demonstrated in the sample applications): The application must contain 32 bit constant values referencing the base and size of the stack section (e.g for a stack section defined in the linker command file as 'stack'):

```
extern const uint32 __ghsbegin_stack[];  
extern const uint32 __ghssize_stack[];  
const uint32 OS_STACK0_BASE = (uint32)__ghsbegin_stack;  
const uint32 OS_STACK0_SIZE = (uint32)__ghssize_stack;
```

The fill pattern used by the debugger must be contained within a 32 bit constant OS_STACK_FILL (e.g. for a fill pattern 0xCAFEF00D).

```
const uint32 OS_STACK_FILL = 0xCAFEF00D;
```

The stack must be initialized with this fill pattern either in the application start-up routines or during debugger initialization.

7 Hardware

7.1 Supported Devices

This port of RTA-OS has been developed to work with the following target:

Name: Renesas

Device: V850E2

The following variants of the V850E2 are supported:

- DF3502
- DF3504
- DF3506
- DF3508
- DF3548
- DF3549
- DF3550
- DF3551
- DF3552
- DF3553
- DF3554
- DF3555
- DF3556
- DF3557
- DF3558
- DF3559
- DF3560
- DF3570
- DF3571
- DF3572
- DF3573
- DF3574

- DF3575
- DF3576
- DF3577
- DF3578
- DF3579
- DF3580
- DF3581
- DF3582
- DF3583
- DF3584
- DF3585
- DF3586
- DF3587
- DF3588
- DF3589
- DF4000
- DF4001
- DF4002
- DF4003
- DF4004
- DF4005
- DF4006
- DF4007
- DF4008
- DF4009
- DF4010
- DF4011

- DF4012
- GenericV850E2
- GenericV850E2_8IPL

If you require support for a variant of V850E2 not listed above, please contact ETAS.

7.2 Register Usage

7.2.1 Initialization

RTA-OS requires the following registers to be initialized to the indicated values before `StartOS()` is called.

Register	Setting
EH_BASE	The interrupt vector base address must be set to match the application vector table address. This can be done by calling <code>Os_InitializeVectorTable()</code> .
EH_CFG	The RINT bit must be set to match the interrupt vector mode declared in the configuration. This can be done by calling <code>Os_InitializeVectorTable()</code> .
EICn	The INTC priorities must be set to match the values declared in the configuration. This can be done by calling <code>Os_InitializeVectorTable()</code> .
PSW[PP,NPV,DMP,IMP]	The CPU must be in trusted state (i.e. PSW.PP, NPV, DMP, and IMP bits clear).
SP	The stack must be allocated and SP initialized before calling <code>Os_InitializeVectorTable()</code> .

7.2.2 Modification

The following registers must not be modified by user code after the call to `StartOS()`:

Register	Notes
ISPR	User code may not directly change the In-Service Priority Register.
PMR	User code may not directly change the Priority Mask Register.
R2	Reserved with the <code>reserve_r2</code> compiler option and preserved by the OS. The r2 register is reserved for future OS use
SP	User code may not change the stack pointer other than as a result of normal program flow.

7.3 Interrupts

This section explains the implementation of RTA-OS's interrupt model on the V850E2.

7.3.1 Interrupt Priority Levels

Interrupts execute at an interrupt priority level (IPL). RTA-OS standardizes IPLs across all targets. IPL 0 indicates task level. IPL 1 and higher indicate an interrupt priority. It is important that you don't confuse IPLs with task priorities. An IPL of 1 is higher than the highest task priority used in your application.

The IPL is a target-independent description of the interrupt priority on your target hardware. The following table shows how IPLs are mapped onto the hardware interrupt priorities of the V850E2:

IPL	PMR	Description
0	0x0000	User (task) level. No Interrupts are masked
1	0x8000	V850E2M core EI Maskable Category 1 and 2 interrupts
1	0x0080	V850E2S core EI Maskable Category 1 and 2 interrupts
2	0xC000	V850E2M core EI Maskable Category 1 and 2 interrupts
2	0x00C0	V850E2S core EI Maskable Category 1 and 2 interrupts
...	...	EI Maskable Category 1 and 2 interrupts
8	0xFF00	V850E2M core EI Maskable Category 1 and 2 interrupts
8	0x00FF	V850E2S core EI Maskable Category 1 and 2 interrupts
...	...	EI Maskable Category 1 and 2 interrupts
16	0xFFFF	V850E2M EI Maskable Category 1 and 2 interrupts
17	N/A	EI Category 1 interrupts maskable through the PSW.ID bit
18	N/A	FE Category 1 interrupts maskable through the PSW.NP bit
19	N/A	FE Category 1 traps and FE level non-maskable interrupts (FENMI)

Even though a particular mapping is permitted, all Category 1 ISRs must have equal or higher IPL than all of your Category 2 ISRs.

The range of IPLs that EI interrupts support is not consistent over all V850E2 variants. EI interrupts can have up to 16 IPLs for V850E2M core devices. On V850E2S cores this is restricted to 8 levels.

The V850E2 interrupt controller hardware expects IPL values to work counter to the standardized RTA-OS scheme. In the V850E2 zero is always the highest IPL and depending upon the core variant either 7 or 15 is the lowest IPL. RTA-OS converts the IPLs from its standardized scheme to that expected by the V850E2 hardware. The function `Os_InitializeVectorTable()` can be used to initialize the EI interrupt priorities to that detailed in the RTA-OS application

configuration. If this function is not used then care must be taken that interrupts are initialized to the IPLs expected by RTA-OS otherwise the OS will not operate correctly.

7.3.2 Allocation of ISRs to Interrupt Vectors

The following restrictions apply for the allocation of Category 1 and Category 2 interrupt service routines (ISRs) to interrupt vectors on the V850E2. A ✓ indicates that the mapping is permitted and a ✗ indicates that it is not permitted:

Address	Category 1	Category 2
0x0010, FEINT FE interrupt maskable through the PSW.NP bit	✓	✗
0x0020, FENMI FE trap	✓	✗
0x0030, FETRAP/MDP/MEP/MIP/PPI/RIEX/SY-SERR/TSI/UCPOP FE trap	✓	✗
0x0040, EITRAP0 EI trap maskable through the PSW.ID bit	✓	✗
0x0050, EITRAP1 EI trap maskable through the PSW.ID bit	✓	✗
0x0060, FE Category 1 trap	✓	✗
0x0070, FPI/FPP EI trap	✓	✗
0x0080+, Maskable EI interrupt handlers	✓	✓

7.3.3 Vector Table

rtaosgen normally generates an interrupt vector table for you automatically. You can configure “Suppress Vector Table Generation” as TRUE to stop RTA-OS from generating the interrupt vector table.

Depending upon your target, you may be responsible for locating the generated vector table at the correct base address. The following table shows the section (or sections) that need to be located and the associated valid base address:

Section	Valid Addresses
Os_intvect	Should be located at absolute address 0x10 or located in accordance with the EH_BASE register. The first entry is the FEINT interrupt handler offset 0x10.

The function `Os_InitializeVectorTable` should be called before `StartOS()` to set the `EH_BASE` register to the address of the label `Os_interrupt_vectors` aligned to a 0x2000 byte boundary.

The RTA-OS generated vector table does not include the reset vector. You should provide this and locate it before the FEINT interrupt handler.

When the default interrupt is configured the RTA-OS generated vector table contains entries for all supported interrupts for the selected chip variant. If the default interrupt is not configured then entries are created up the highest configured interrupt.

RTA-OS reserves one EI trap vector (i.e. configurable to be either 0x40 or 0x50) for applications that use untrusted code (see section 4.2.11 Trust Trap for more details).

RTA-OS supports two vector table formats: the default multiple 16 byte entry table for each EI interrupt source, and a single entry at offset 0x80 for all EI interrupt sources. The single entry scheme results in a demultiplexing handler located at offset 0x80 which references a table of 4 byte addresses. To select this scheme in the GUI the "Interrupt vector entry size" should be set to 4.

When you supply the vector table (i.e. 'Suppress Vector Table Generation' is set to TRUE) the label `0s_interrupt_vectors` should be placed at the start of the vector table so that the function `0s_InitializeVectorTable()` can set the `EH_BASE` register to the correct address. Note that the minimum alignment of the `EH_BASE` register is 0x2000 bytes so the vector table must be aligned accordingly.

If you supply a 16 byte entry vector table RTA-OS expects the following entries for an EI maskable interrupts (offset 0x80 and above) otherwise nested interrupt behavior will not be correctly supported:

```
-- Vector 0x03F0
prepare {r28,r29,r30,r31},21,sp
mov OS_Cat2_medium_isr_INDEX,r29
jr _0s_mid_wrapper
.align 16
```

Where the symbol `OS_Cat2_medium_isr_INDEX` contains an index value defined in the file `0s_vec_include.850` for the interrupt `Cat2_medium_isr`. This should be included when building the vector table. A symbol is created for each EI interrupt.

Using Raw Exception Handlers

RTA-OS supports direct branches in the interrupt vector table for interrupt vectors with address offsets less than 0x80. Normally RTA-OS produces wrapper code around the interrupt handler functions for these exceptions to enforce the correct interrupt controller IPL settings. If interrupt handlers in this address offset range are given names starting with "b_" then the interrupt vector table entry is an unconditional jump relative "jr" instruction to the

handler function. When using these raw exception handlers it is the user's responsibility that:

- The correct register context is saved and restored.
- The correct return instruction is used.
- Interrupts are not re-enabled in these handlers.
- The RTA-OS API is not used in these handlers.

7.3.4 Writing Category 1 Interrupt Handlers

Raw Category 1 interrupt service routines (ISRs) must correctly handle the interrupt context themselves. RTA-OS provides an optional helper macro `CAT1_ISR` that can be used to make code more portable. Depending on the target, this may cause the selection of an appropriate interrupt control directive to indicate to the compiler that a function requires additional code to save and restore the interrupt context.

A Category 1 ISR therefore has the same structure as a Category 2 ISR, as shown below.

```
CAT1_ISR(Category1Handler) {  
    /* Handler routine */  
}
```

7.3.5 Writing Category 2 Interrupt Handlers

Category 2 ISRs are provided with a C function context by RTA-OS, since the RTA-OS kernel handles the interrupt context itself. The handlers are written using the `ISR()` macro as shown below:

```
#include <Os.h>  
ISR(MyISR) {  
    /* Handler routine */  
}
```

You must not insert a return from interrupt instruction in such a function. The return is handled automatically by RTA-OS.

7.3.6 Default Interrupt

The 'default interrupt' is intended to be used to catch all unexpected interrupts. All unused interrupts have their interrupt vectors directed to the named routine that you specify. The routine you provide is not handled by RTA-OS and must correctly handle the interrupt context itself. The handler

must use the `CAT1_ISR` macro in the same way as a Category 1 ISR (see Section 7.3.4 for further details).

When the V850E2 comes out of reset all maskable EI interrupts (i.e. those with address offsets 0x80 and above) are masked and set to trigger at the lowest priority. When the function `Os_InitializeVectorTable()` is used to initialize the EI interrupt priorities only the configured interrupts in the application are set up. All unused EI interrupt channels are left in their reset state even if the RTA-OS Default Interrupt is configured. For a Default Interrupt to trigger on an unattached EI interrupt channel then these unattached channels must have been initialized by application code.

7.4 Memory Model

The following memory models are supported:

Model	Description
Standard	The standard 32-bit EABI memory model is used.

7.5 Processor Modes

RTA-OS can run in the following processor modes:

Mode	Notes
Trusted	All trusted code runs in trusted state (i.e. <code>PSW.PP</code> , <code>NPV</code> , <code>DMP</code> , and <code>IMP</code> clear).
Untrusted	All untrusted code runs in non-trusted state (i.e. <code>PSW.PP</code> , <code>NPV</code> , <code>DMP</code> , and <code>IMP</code> set).

7.6 Stack Handling

RTA-OS uses a single stack for all tasks and ISRs.

RTA-OS manages the stack (via register R3).

8 Performance

This chapter provides detailed information on the functionality, performance and memory demands of the RTA-OS kernel. RTA-OS is highly scalable. As a result, different figures will be obtained when your application uses different sets of features. The figures presented in this chapter are representative for the V850E2/GHS port based on the following configuration:

- There are 32 tasks in the system
- Standard build is used
- Stack monitoring is disabled
- Time monitoring is disabled
- There are no calls to any hooks
- Tasks have unique priorities
- Tasks are not queued (i.e. tasks are BCC1 or ECC1)
- All tasks terminate/wait in their entry function
- Tasks and ISRs do not save any auxiliary registers (for example, floating point registers)
- Resources are shared by tasks only
- The generation of the resource RES_SCHEDULER is disabled

8.1 Measurement Environment

The following hardware environment was used to take the measurements in this chapter:

Device	DF3506 on NEC AB-050-Px4
CPU Clock Speed	80.0MHz
Stopwatch Speed	40.0MHz

8.2 RAM and ROM Usage for OS Objects

Each OS object requires some ROM and/or RAM. The OS objects are generated by **rtaosgen** and placed in the RTA-OS library. In the main:

- `0s_Cfg_Counters` includes data for counters, alarms and schedule tables.
- `0s_Cfg` contains the data for most other OS objects.

The following table gives the ROM and/or RAM requirements (in bytes) for each OS object in a simple configuration. Note that object sizes will vary depending on the project configuration and compiler packing issues.

Object	ROM	RAM
Alarm	2	12
Cat 2 ISR	8	0
Counter	20	4
CounterCallback	4	0
ExpiryPoint	3.5	0
OS Overheads (max)	0	63
OS-Application	0	0
Resource	8	4
ScheduleTable	16	12
Task	20	0

8.3 Stack Usage

The amount of stack used by each Task/ISR in RTA-OS is equal to the stack used in the Task/ISR body plus the context saved by RTA-OS. The size of the run-time context saved by RTA-OS depends on the Task/ISR type and the exact system configuration. The only reliable way to get the correct value for Task/ISR stack usage is to call the `Os_GetStackUsage()` API function.

Note that because RTA-OS uses a single-stack architecture, the run-time contexts of all tasks reside on the same stack and are recovered when the task terminates. As a result, run-time contexts of mutually exclusive tasks (for example, those that share an internal resource) are effectively overlaid. This means that the worst case stack usage can be significantly less than the sum of the worst cases of each object on the system. The RTA-OS tools automatically calculate the total worst case stack usage for you and present this as part of the configuration report.

8.4 Library Module Sizes

The RTA-OS kernel is demand linked. This means that each API call is placed into a separately linkable module. The following table lists the section sizes for each API module (in bytes) for the simple configuration in standard status.

Library Module	.Os_intvect	.Os_primitives	.bss	.rodata	.text
ActivateTask					214

Library Module	.Os_intvect	.Os_primitives	.bss	.rodata	.text
AdvanceCounter					4
CallTrustedFunction					26
CancelAlarm					158
ChainTask					206
CheckISRMemoryAccess					44
CheckObjectAccess					110
CheckObjectOwnership					106
CheckTaskMemoryAccess					44
ClearEvent					60
ControlIdle			4		50
DisableAllInterrupts			6		66
DispatchTask					268
ElapsedTime					168
EnableAllInterrupts					78
GetActiveApplicationMode					10
GetAlarm					290
GetAlarmBase					52
GetApplicationID					42
GetCounterValue					80
GetCurrentApplicationID					42
GetElapsedCounterValue					136
GetEvent					60
GetExecutionTime					62
GetISRID					10
GetIsrMaxExecutionTime					62
GetIsrMaxStackUsage					62
GetResource					124
GetScheduleTableStatus					80
GetStackSize					6
GetStackUsage					62
GetStackValue					16
GetTaskID					16
GetTaskMaxExecutionTime					62
GetTaskMaxStackUsage					62
GetTaskState					40
GetVersionInfo					24
Idle					4
InShutdown					2

Library Module	.Os_intvect	.Os_primitives	.bss	.rodata	.text
IncrementCounter					22
NextScheduleTable					234
Os_Cfg			561	776	270
Os_Cfg_Counters				728	4408
Os_Cfg_KL					48
Os_GetCurrentIMask					8
Os_GetCurrentTPL					30
Os_Stack		4			
Os_Trust					12
Os_Vectors	1696				
Os_Wrapper					180
Os_mid_wrapper		264			
Os_setjmp		136			
Os_vec_init				12	376
ProtectionSupport					80
ReleaseResource					146
ResetIsrMaxExecutionTime					60
ResetIsrMaxStackUsage					60
ResetTaskMaxExecutionTime					60
ResetTaskMaxStackUsage					60
ResumeAllInterrupts					78
ResumeOSInterrupts					78
Schedule					178
SetAbsAlarm					178
SetEvent					60
SetRelAlarm					294
SetScheduleTableAsync					110
ShutdownOS					112
StackOverrunHook					6
StartOS					230
StartScheduleTableAbs					226
StartScheduleTableRel					206
StartScheduleTableSynchron					110
StopScheduleTable					142
SuspendAllInterrupts			6		66
SuspendOSInterrupts			6		90
SyncScheduleTable					110
SyncScheduleTableRel					110

Library Module	.Os_intvect	.Os_primitives	.bss	.rodata	.text
TerminateTask					24
ValidateCounter					38
ValidateISR					14
ValidateResource					32
ValidateScheduleTable					32
ValidateTask					34
WaitEvent					60

8.5 Execution Time

The following tables give the execution times in CPU cycles, i.e. in terms of ticks of the processor's program counter. These figures will normally be independent of the frequency at which you clock the CPU. To convert between CPU cycles and SI time units the following formula can be used:

$$\text{Time in microseconds} = \text{Time in cycles} / \text{CPU Clock rate in MHz}$$

For example, an operation that takes 50 CPU cycles would be:

- at 20MHz = $50/20 = 2.5\mu s$
- at 80MHz = $50/80 = 0.625\mu s$
- at 150MHz = $50/150 = 0.333\mu s$

While every effort is made to measure execution times using a stopwatch running at the same rate as the CPU clock, this is not always possible on the target hardware. If the stopwatch runs slower than the CPU clock, then when RTA-OS reads the stopwatch, there is a possibility that the time read is less than the actual amount of time that has elapsed due to the difference in resolution between the CPU clock and the stopwatch (the *User Guide* provides further details on the issue of uncertainty in execution time measurement).

The figures presented in Section 8.5.1 have an uncertainty of 1 CPU cycle(s).

8.5.1 Context Switching Time

Task switching time is the time between the last instruction of the previous task and the first instruction of the next task. The switching time differs depending on the switching contexts (e.g. an `ActivateTask()` versus a `ChainTask()`).

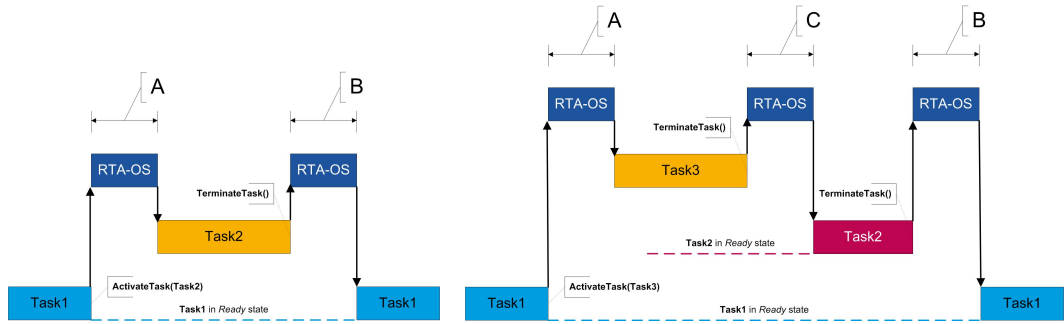
Interrupt latency is the time between an interrupt request being recognized by the target hardware and the execution of the first instruction of the user provided handler function:

For Category 1 ISRs this is the time required for the hardware to recognize the interrupt.

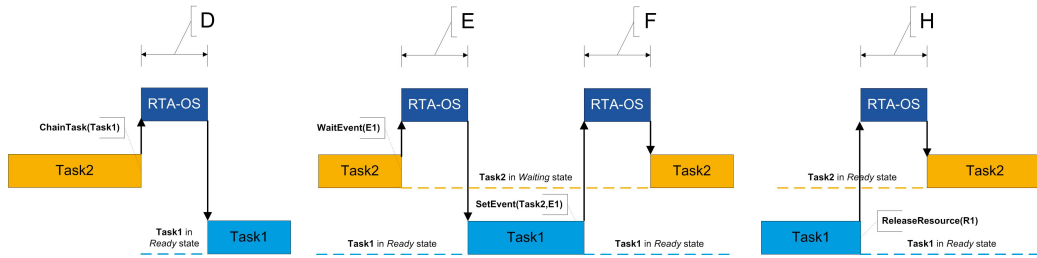
For Category 2 ISRs this is the time required for the hardware to recognize the interrupt plus the time required by RTA-OS to set-up the context in which the ISR runs.

Figure 8.1 shows the measured context switch times for RTA-OS.

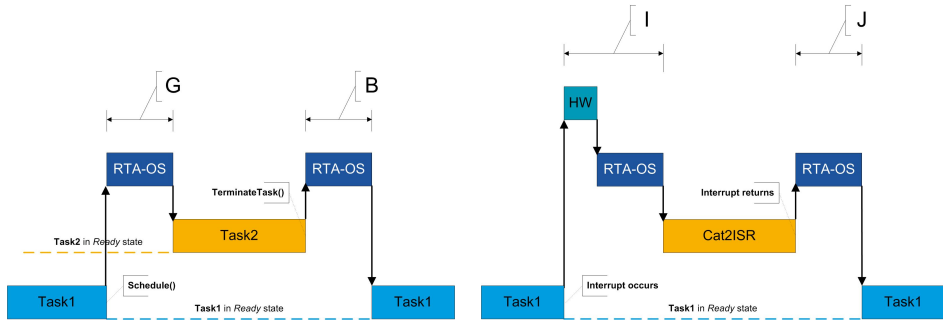
Switch	Key	CPU Cycles	Actual Time
Task activation	A	124	1.55us
Task termination with resume	B	76	950ns
Task termination with switch to new task	C	94	1.18us
Chaining a task	D	170	2.12us
Waiting for an event resulting in transition to the WAITING state	E	320	4us
Setting an event results in task switch	F	416	5.2us
Non-preemptive task offers a pre-emption point (co-operative scheduling)	G	122	1.53us
Releasing a resource results in a task switch	H	122	1.53us
Entering a Category 2 ISR	I	116	1.45us
Exiting a Category 2 ISR and resuming the interrupted task	J	162	2.02us
Exiting a Category 2 ISR and switching to a new task	K	152	1.9us
Entering a Category 1 ISR	L	88	1.1us



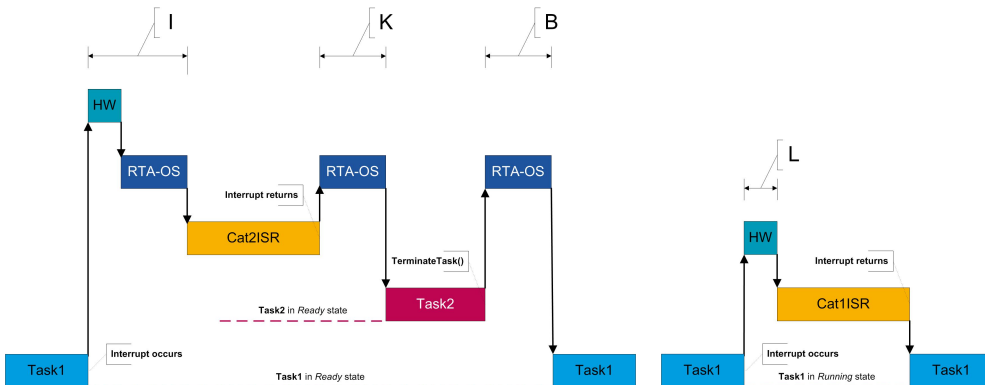
(a) Task activated. Termination resumes preempted task. (b) Task activated. Termination switches into new task.



(c) Task chained. (d) Task waits. Task is resumed when event set. (e) Task switch when resource is released.



(f) Request for scheduling made by non-preemptive task. (g) Category 2 interrupt entry. Interrupted task resumed on exit.



(h) Category 2 interrupt entry. Switch to new task on exit. (i) Category 1 interrupt entry.

Figure 8.1: Context Switching

9 Finding Out More

Additional information about V850E2/GHS-specific parts of RTA-OS can be found in the following manuals:

V850E2/GHS Release Note. This document provides information about the V850E2/GHS port plug-in release, including a list of changes from previous releases and a list of known limitations.

Information about the port-independent parts of RTA-OS can be found in the following manuals:

Getting Started Guide. This document explains how to install RTA-OS tools and describes the underlying principles of the operating system

Reference Guide. This guide provides a complete reference to the API, programming conventions and tool operation for RTA-OS.

User Guide. This guide shows you how to use RTA-OS to build real-time applications.

10 Contacting ETAS

10.1 Technical Support

Technical support is available to all users with a valid support contract. If you do not have a valid support contract, please contact your regional sales office (see Section 10.2.2).

The best way to get technical support is by email. Any problems or questions about the use of the product should be sent to:

`rta.hotline.uk@etas.com`

If you prefer to discuss your problem with the technical support team, you call the support hotline on:

+44 (0)1904 562624.

The hotline is available during normal office hours (0900-1730 GMT/BST).

In either case, it is helpful if you can provide technical support with the following information:

- Your support contract number
- Your .xml, .arxml, .rtaos and/or .stc files
- The command line which caused the error
- The version of the ETAS tools you are using
- The version of the compiler tool chain you are using
- The error message you received (if any)
- The file Diagnostic.dmp if it was generated

10.2 General Enquiries

10.2.1 ETAS Global Headquarters

ETAS GmbH

Borsigstrasse 14
70469 Stuttgart
Germany

Phone: +49 711 3423-0
Fax: +49 711 3423-2106
WWW: www.etas.com

10.2.2 ETAS Local Sales & Support Offices

Contact details for your local sales office and local technical support team (where available) can be found on the ETAS web site:

ETAS subsidiaries www.etas.com/en/contact.php
ETAS technical support www.etas.com/en/hotlines.php

Index

A

Assembler, [35](#)
AUTOSAR OS includes
 Os.h, [28](#)
 Os_Cfg.h, [28](#)
 Os_MemMap.h, [28](#)

C

CAT1_ISR, [31](#)
Compiler, [34](#)
Compiler (Green Hills Software
 v5.1.7D), [33](#)
Compiler Versions, [33](#)
Configuration
 Port-Specific Parameters, [23](#)

D

Debugger, [37](#)

E

ETAS License Manager, [12](#)
 Installation, [12](#)

F

Files, [28](#)

H

Hardware
 Requirements, [10](#)

I

Installation, [10](#)
 Default Directory, [11](#)
 Verification, [21](#)
Interrupts, [42](#)
 Category 1, [45](#)
 Category 2, [45](#)
 Default, [45](#)
IPL, [42](#)

L

Librarian, [36](#)
Library
 Name of, [28](#)
License, [12](#)

Borrowing, [17](#)
Concurrent, [14](#)
Grace Mode, [13](#)
Installation, [16](#)
Machine-named, [14](#)
Status, [17](#)
Troubleshooting, [18](#)
User-named, [14](#)

Linker, [36](#)

M

Memory Model, [46](#)

O

Options, [34](#)
Os_Cbk_GetAbortStack, [30](#)
Os_Clear_x, [31](#)
Os_Disable_x, [31](#)
Os_Enable_x, [32](#)
Os_InitializeVectorTable, [29](#)
Os_StackSizeType, [32](#)
Os_StackValueType, [32](#)

P

Parameters of Implementation, [23](#)
Performance, [47](#)
 Context Switching Times, [52](#)
 Library Module Sizes, [48](#)
 RAM and ROM, [47](#)
 Stack Usage, [48](#)
Processor Modes, [46](#)
 Trusted, [46](#)
 Untrusted, [46](#)

R

Registers
 EH_BASE, [41](#)
 EH_CFG, [41](#)
 EICn, [41](#)
 Initialization, [41](#)
 ISPR, [41](#)
 Non-modifiable, [41](#)
 PMR, [41](#)
 PSW[PP,NPV,DMP,IMP], [41](#)

R2, [41](#)

SP, [41](#)

S

Software

Requirements, [10](#)

Stack, [46](#)

T

Target, [39](#)

Variants, [41](#)

Toolchain, [33](#)

V

Variants, [41](#)

Vector Table

Base Address, [43](#)