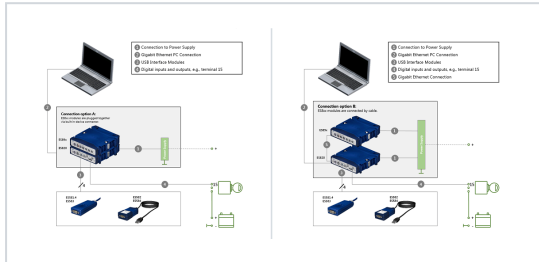


Ordering Information



Cabling options A and B

Order Name	Short Name	Order Number
ES820 Module		
ES820.1 Drive Recorder Module (without CBE250 Gigabit Ethernet cable and ES801 base module)	ES820.1	F-00K-110-251
Optional Accessories for ES820 Modules		
ES800 Memory Module (Type 1) - 500 GB	AC800MM1-500	F-00K-110-255
ES800 Memory Module (Type 1) - 1 TB	AC800MM1-1T	F-00K-110-256
Docking station for ES820 memory modules (for reading out ES800 memory modules with a PC or laptop), incl. 5V power adapter and USB 3 cable	AC800MM1-DS	F-00K-110-491
Optional Cables and Connectors for ES820 Modules		
1 - Connection to Power Supply		
ES801.1 Base Module for ES800 – Banana (2mc), 2m	ES801.1	F-00K-109-483
ES801.1-S Base Module for ES800 - Safety Banana (2mc), 2m	ES801.1-S	F-00K-110-057

2 – Gigabit Ethernet PC Connection

1 GBit/s Ethernet PC Connection Cable , Lemo 1B FGM – RJ45 (10fc-8mc), 3 m CBE250.1-3 F-00K-109-469



1-Gbit/s Ethernet PC Connection Cable, Lemo 1B FGM – RJ45 (10fc-8mc), 5 m CBE250.1-5 F-00K-109-470



1 GBit/s Ethernet PC Connection Cable, Lemo 1B FGM – RJ45 (10fc-8mc), 8 m CBE250.1-8 F-00K-109-471



3 - USB Interface Modules

ES582.1 CAN FD Bus Interface USB Module (A Y-Cable for connection of both channels, the CBCF100 (F-00K-107-939) is included in the package) ES582.1 F-00K-110-731

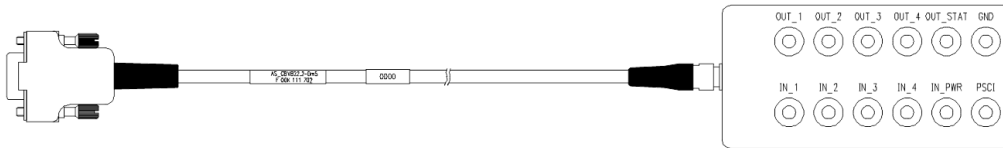
ES583.1 FlexRay Interface USB Module ES583.1 F-00K-107-805

ES584.1 USB CAN FD and LIN Bus Interface Module (A Y-Cable for connection of both channels, the CBCF100 (F-00K-107-939) is included in the package) ES584.1 F-00K-110-831

4 – Digital inputs and outputs, e.g. terminal 15 [1]

ES820 IO cable basic, DSUB – Banana (25fc - 2 Banana) CBV821.1-0m8 F-00K-110-561

Digital I/O Connection Cable with Breakout Box, Micro-D – 12x Banana (25fc-12fc), 0m5 (1.6 ft) AS_CBV822.2-0m5 F-00K-111-702



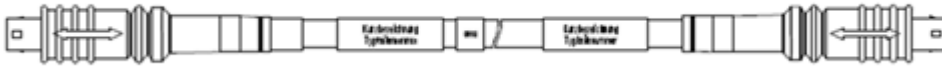
5 – Gigabit Ethernet Connection

1 GBit/s Ethernet Connection and Power Supply

Cable, Lemo 1B FGM - Lemo 1B FGH (10fc-10mc), 3 CBE260.1-3

F-00K-109-446

m

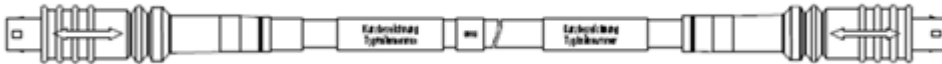


1 GBit/s Ethernet Connection and Power Supply

Cable, Lemo 1B FGM - Lemo 1B FGH (10fc-10mc), 8 CBE260.1-8

F-00K-109-447

m



Notes

[1] The drive recorder and measurements with the drive recorder can be switched on and off or started and stopped with the help of external digital signals at the digital I/O connector. Please contact your local ETAS representative for further information on the wide range of remote control options available.